

Lighthouse project in SYLT

A unusual but very interesting project now be finished on the island of SYLT in the German North Sea. The customer want to have a camera mounted on the historical lighthouse overlooking the harbor. Basicly he chooses the AXIS 6032 which have a small size and a wide range zoom optic. For this project the problem was the color (incase of the monument preservation office the housing color have to be in lighthouse black) the lenght of the wallmount (the original wallmount was to short for this mounting position) and the size of the pole mount (here we have a diameter from 180mm)

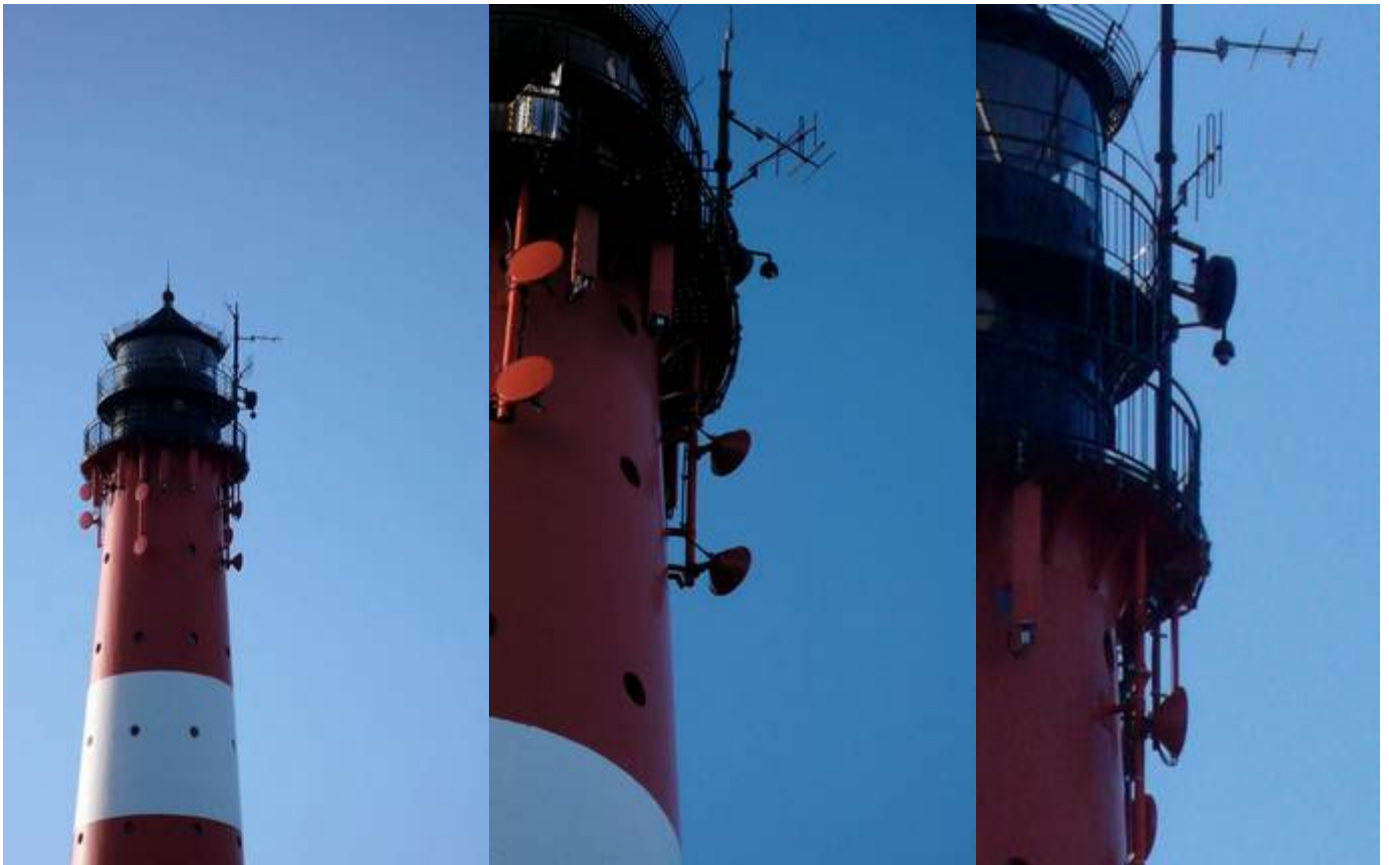


We have very good experiance in coloring a camera. All aluminium parts are powder codet and the plastic shunshield gets a high class coloring. Coloring plastic is not very easy if you want to have it UV protected and a long livetime. You need 4 working steps, preparing the material by cleaning ect, basic layer, color layer and a pale layer for UV protection.

In step 2 we make a longer wallmount extention with 60 cm and on the backside we addet a new polemount adapter with 80-180mm (also 100-200mm modells are available). Because it is a high point direct on the sea we took very strong materials.



the new camera mounted to the antenna pole. Here you can see the new length of the wallmount.





the 6032 in new color



Wallmount 60cm



blue version

We can deliver your housing in the color you like. We make a full service, dismantel, coloring (with warrenty) ,assembl and test of all componentes. If you need a special mounting , please let us know.



Finally a nice picture from the island. Thanks for your interest

